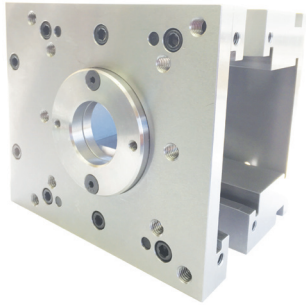


Maximize production changeovers and reduce downtime with a more cost effective approach to injection molding.



U-Frame



Laminated  
Insert



Solid  
Insert



T-Style  
Insert

F.I.T.S.<sup>®</sup> (*Fast Interchangeable Tooling System*) replaces the need for standard mold bases by utilizing a frame and interchangeable inserts for short production runs, sampling and prototyping.

Now available in 6 new frame sizes and expanded insert styles, each of which allows for a customized approach with less than five minutes in changeover effort with no special equipment needed.

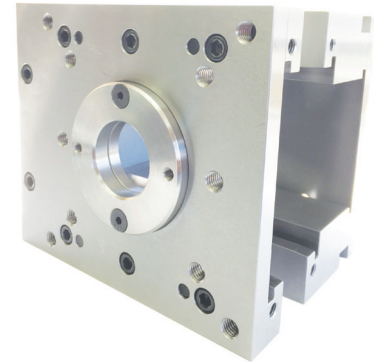
### Features and Benefits:

- In stock with same day shipping
- Shipped assembled (by request only)
- Guided Ejection included at no extra charge
- Return Pins & Additional Leader Pins available
- Clamp Slots included
- Compatible with M.U.D.<sup>®</sup> style U-Frames
- Available in Solid, Laminated & T-Style

**PCS F.I.T.S.<sup>®</sup> into your production**

## F.I.T.S.<sup>®</sup> U-Frames

New Frame Size	Item Number
<b>05/05*</b>	<b>0505-UF-321</b>
<b>08/09*</b>	<b>0809-UF-321</b>
<b>08/10*</b>	<b>0810-UF-321</b>
<b>84/90*</b>	<b>8490-UF-321</b>
<b>10/12*</b>	<b>1012-UF-321</b>
<b>10/14*</b>	<b>1014-UF-321</b>



\*New & Expanded



## F.I.T.S.<sup>®</sup> U-Inserts

Style	Series	Insert Size
<b>Solid*</b>	<b>05/05</b>	<b>3.25" x 3.75"</b>
<b>Solid*</b>	<b>08/09</b>	<b>5.0" x 8.0"</b>
Solid	08/10	5.0" x 9.0"
<b>Solid*</b>	<b>84/90</b>	<b>6.5" x 8.0"</b>
<b>Solid*</b>	<b>10/12</b>	<b>7.0" x 10.9"</b>
<b>Solid*</b>	<b>10/14</b>	<b>7.0" x 12.9"</b>
<b>Solid Plus*</b>	<b>08/09</b>	<b>5.0" x 8.0"</b>
Laminated	08/09	5.0" x 8.0"
Laminated	08/10	5.0" x 9.0"
Laminated	84/90	6.5" x 8.0"
Laminated	10/12	7.0" x 10.9"
<b>Laminated*</b>	<b>10/14</b>	<b>7.0" x 12.9"</b>
<b>Laminated Plus*</b>	<b>08/09</b>	<b>5.0" x 8.0"</b>
T-Style	08/09	7.85" x 9.0"
T-Style	08/10	7.85" x 9.0"
T-Style	84/90	8.4" x 9.0"
<b>T-Style Plus*</b>	<b>08/09</b>	<b>7.85" x 9.0"</b>